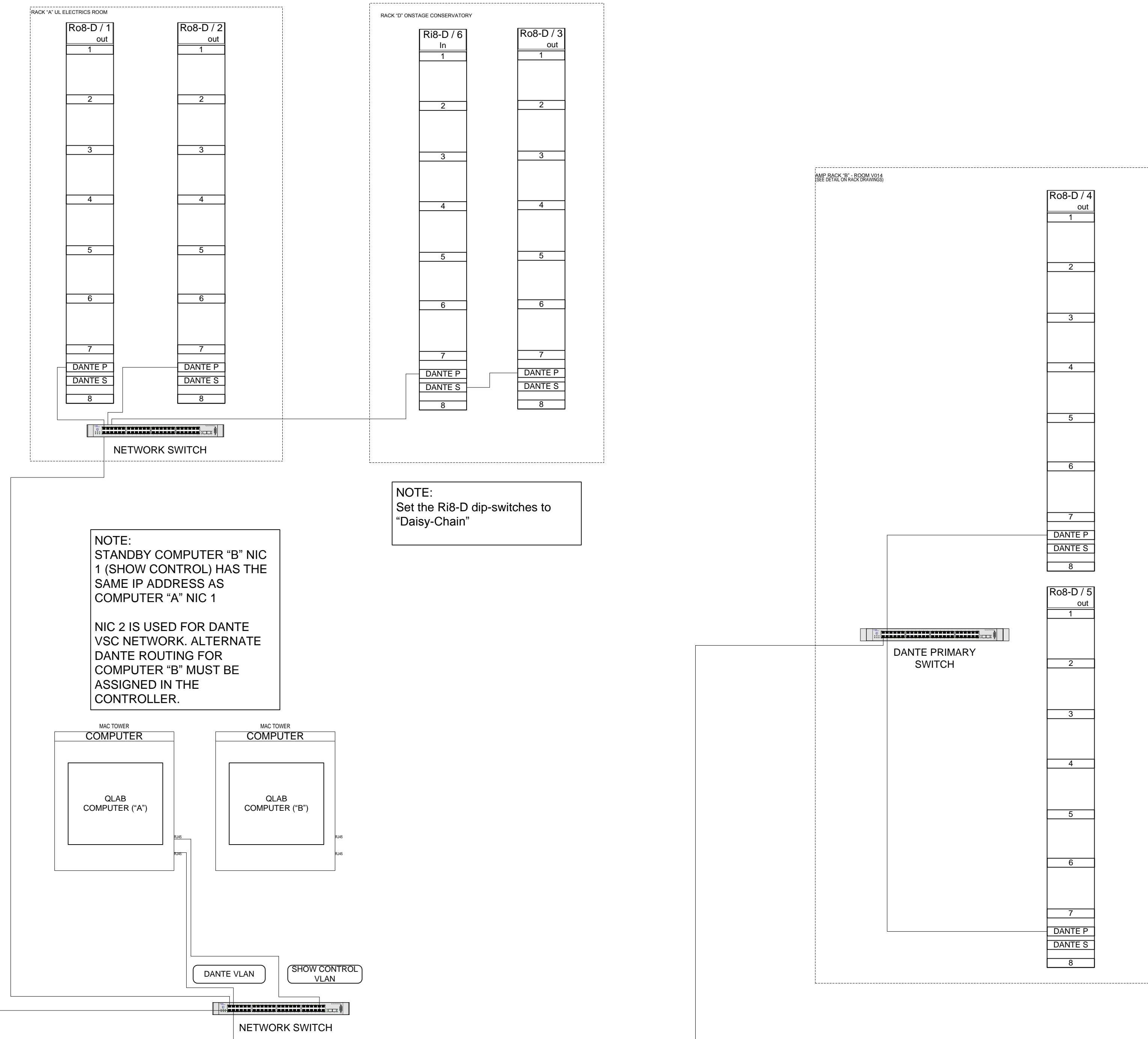


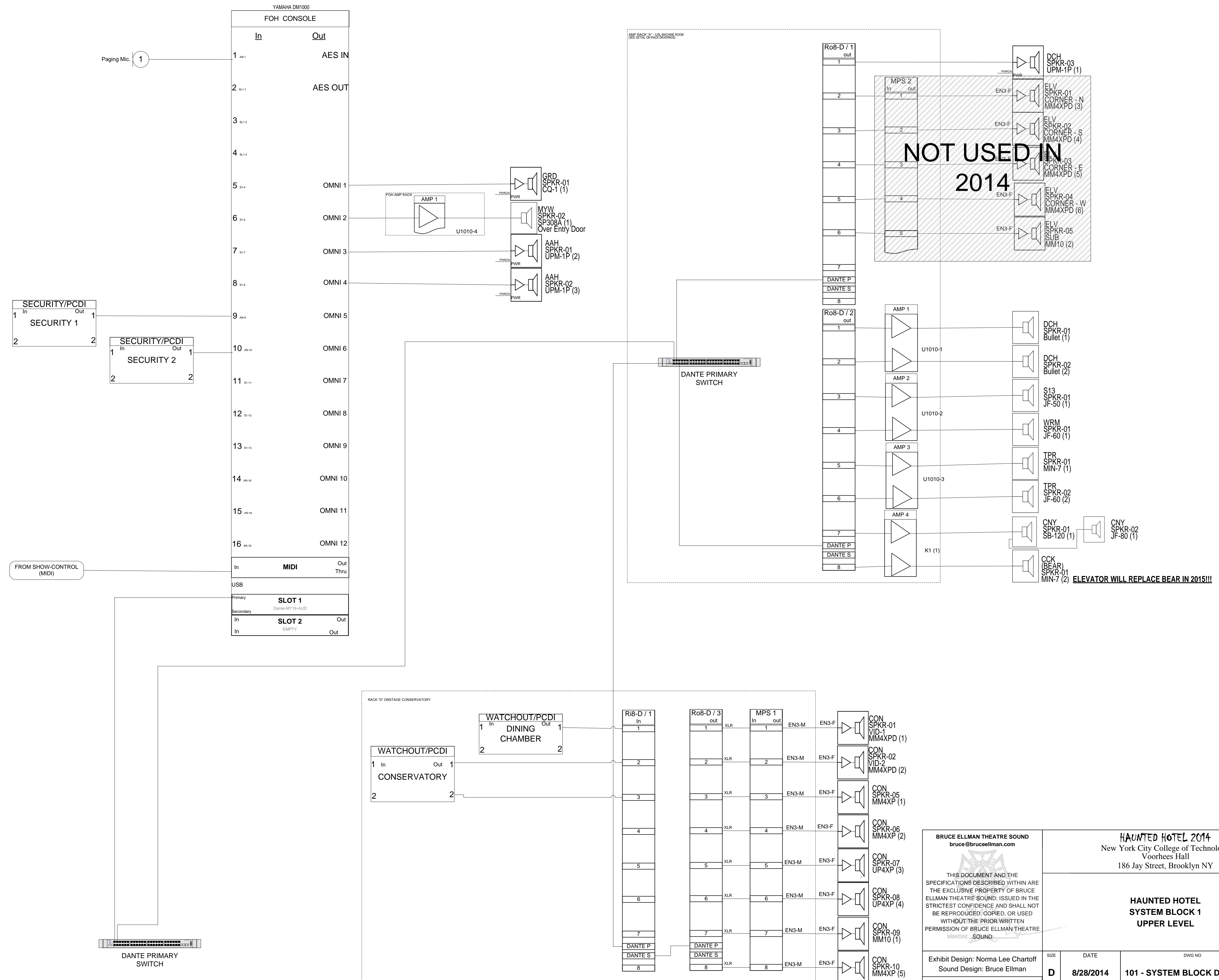
Haunted Hotel Code Key	
Updated May 8, 2014	
Full Name	Three-Letter Code
Ranting Brothers Midway	MWY
Service Entrance	SET
Cellar Steps	CST
O'Skully's Wharf	OWF
Kitchen Prep	KPP
Service Hall	SHL
Scullery	SLY
Boiler	BLR
Numbered Suites	NSS
Foyer	FYR
Coat Check	CCK
Dining Chamber	DCH
Tipsy's Parlour	TPR
Suite 13	S13
Washroom	WRM
Cranny	CNY
Conservatory	CON
Check Out	COT
Patchen's Picture Palace	PPP
Cold Storage	CSG
Elevator	ELV
Technical Areas:	
Central Service Area	CSA
Sound Booth	SBT
Grid Room	GRM
USL Room	ULR
Light Booth	LBT
Catwalk 1	CW1
Catwalk 2	CW2
Catwalk 3	CW3
Dimmer Room	DRM
Room 14	V14
Room 13	V13
Audience Area (House)	AAH
Dressing Room	DRM
Device Types (where n equals unique numeric ID, a= alpha ID)	
Speaker	SPKR-nn
Camera	CAM-nn
Microphone	MIC-nn
Motion Detector	MOTDETC-nn
Magnetic Sensor	MAGSENSR-nn
Photo Sensor	PHOTSENS-nn
Amp Rack	AMPSTACK-a
SFX Rack	SFXRACK-a
TCP-I/O Box	TCPIO-a
Relay Box	RELAY-a
MechFX	MechFX-nn
SPLTRACK-01	Split Rack
Cable Types	
XLR	EN3
Speakon	
Coax/Power	
Cat5	
XGA	
Mechanical	

YAMAHA DM1000 FOH CONSOLE		
In		Out
1	01-1	AES
2	01-2	
3	01-3	
4	01-4	
5	01-5	OMNI 1
6	01-6	OMNI 2
7	01-7	OMNI 3
8	01-8	OMNI 4
9	01-9	OMNI 5
10	01-10	OMNI 6
11	01-11	OMNI 7
12	01-12	OMNI 8
13	01-13	OMNI 9
14	01-14	OMNI 10
15	01-15	OMNI 11
16	01-16	OMNI 12
In	MIDI	Out
USB		Thru
Primary SLOT 1		
Secondary Dims-MY (E-ALD)		
In	SLOT 2	Out
In	TR-10-A1	Out



BRUCE ELLMAN THEATRE SOUND bruce@bruceellman.com 	HAUNTED HOTEL 2014 New York City College of Technology Voorhees Hall 186 Jay Street, Brooklyn NY		
	HAUNTED HOTEL DANTE BLOCK DIAGRAM		
Exhibit Design: Norma Lee Chartoff Sound Design: Bruce Ellman Contract with TheatreWorks Drafted by:	SIZE: D DATE: 8/28/2014	DWG NO: 100 - NETWORK BLOCK	REV:
SCALE: 1 : 1	SHEET: 1 of 11		

Haunted Hotel Code Key	
Updated May 8, 2014	
Full Name	Three-Letter Code
Ranting Brothers Midway	MWY
Service Entrance	SET
Cellar Steps	CST
O'Skully's Wharf	OWF
Kitchen Prep	KPP
Service Hall	SHL
Scullery	SLY
Boiler	BLR
Numbered Suites	NSS
Foyer	FYR
Coat Check	CCK
Dining Chamber	DCH
Tipsy's Parlour	TPR
Suite 13	S13
Washroom	WRM
Cranney	CNY
Conservatory	CON
Check Out	COT
Patchen's Picture Palace	PPP
Cold Storage	CSG
Elevator	ELV
Technical Areas:	
Central Service Area	CSA
Sound Booth	SBT
Grid Room	GRM
USL Room	ULR
Light Booth	LBT
Catwalk 1	CW1
Catwalk 2	CW2
Catwalk 3	CW3
Dimmer Room	DRM
Room 14	V14
Room 13	V13
Audience Area (House)	AAH
Dressing Room	DRM
Device Types (where n equals unique numeric ID, a= alpha ID)	
Speaker	SPKR-nn
Camera	CAM-nn
Microphone	MIC-nn
Motion Detector	MOTDET-nn
Magnetic Sensor	MAGSENSR-nn
Photo Sensor	PHOTSENS-nn
Amp Rack	AMP-RACK-a
SFX Rack	SFXRACK-a
TCP-IO Box	TCPIO-a
Relay Box	RELAY-a
MechFX	MechFX-nn
SPLTRACK-01	Split Rack
Cable Types	
XLR	EN3
Speakon	
Coax/Power	
Cat5	
XGA	
Mechanical	



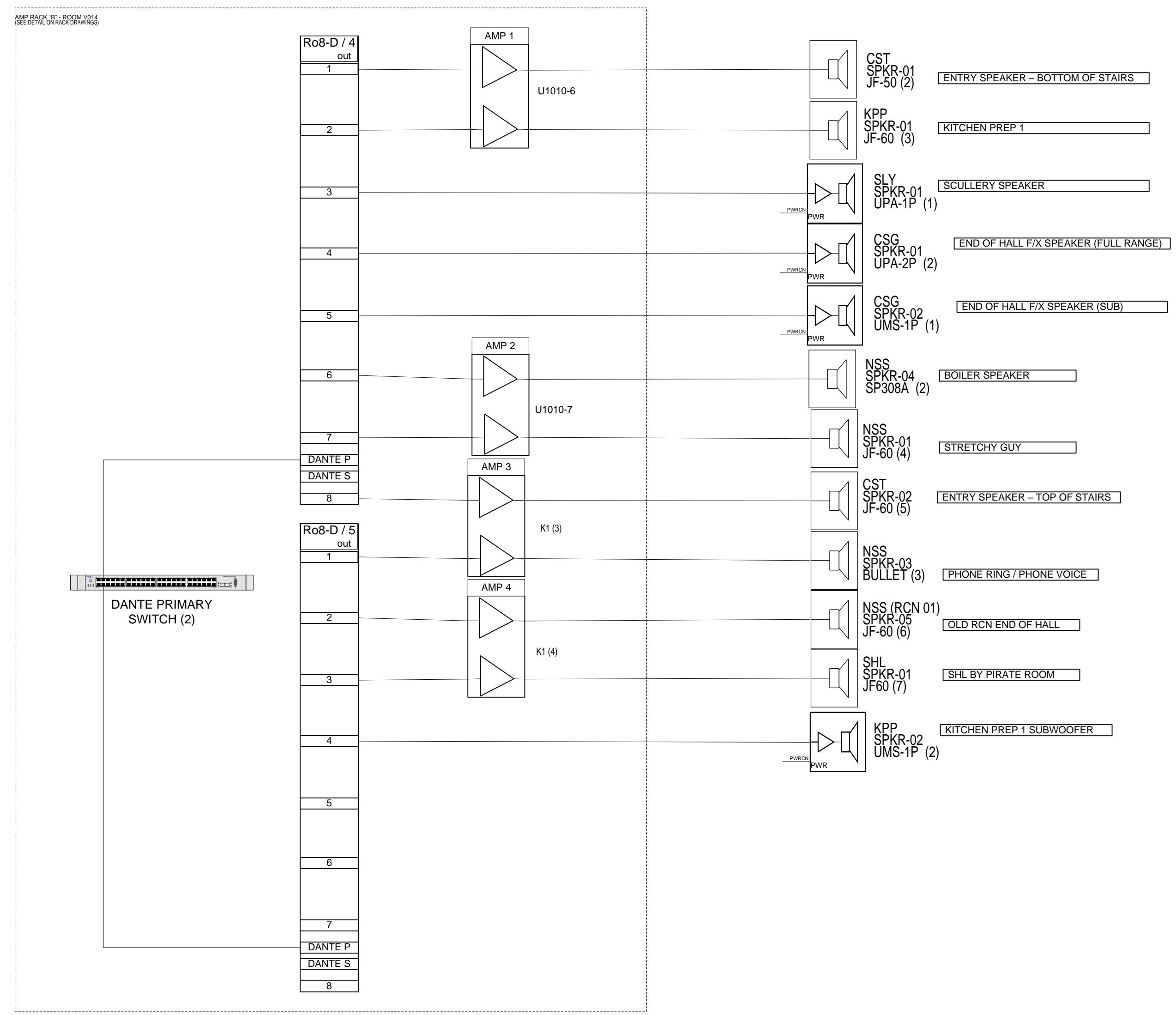
3 LETTER LOCATION CODE
SPEAKER NO.
MODEL
POSITION

NOTE:
PLEASE ASSIGN DEVICE NUMBERS TO THE RIO UNITS (E.G. "Ri8-D 6" IS SET TO DEVICE "6," "Ro8-D 4" IS SET TO DEVICE "4," ETC.)
MPS488e SWITCHES ON BACK SHOULD **NOT** BE SET TO LINK INPUTS!

BRUCE ELLMAN THEATRE SOUND bruce@bruceellman.com THIS DOCUMENT AND THE SPECIFICATIONS DESCRIBED WITHIN ARE THE EXCLUSIVE PROPERTY OF BRUCE ELLMAN THEATRE SOUND; ISSUED IN THE STRICTEST CONFIDENCE AND SHALL NOT BE REPRODUCED, COPIED, OR USED WITHOUT THE PRIOR WRITTEN PERMISSION OF BRUCE ELLMAN THEATRE SOUND.	HAUNTED HOTEL 2014 New York City College of Technology Voorhees Hall 186 Jay Street, Brooklyn NY		
	HAUNTED HOTEL SYSTEM BLOCK 1 UPPER LEVEL		
Exhibit Design: Norma Lee Chartoff Sound Design: Bruce Ellman Contract with TheatreWorks Drafted by:	DATE 8/28/2014	DWG NO 101 - SYSTEM BLOCK DIAGRAM 1	REV
SCALE	1 : 1	SHEET	2 of 11

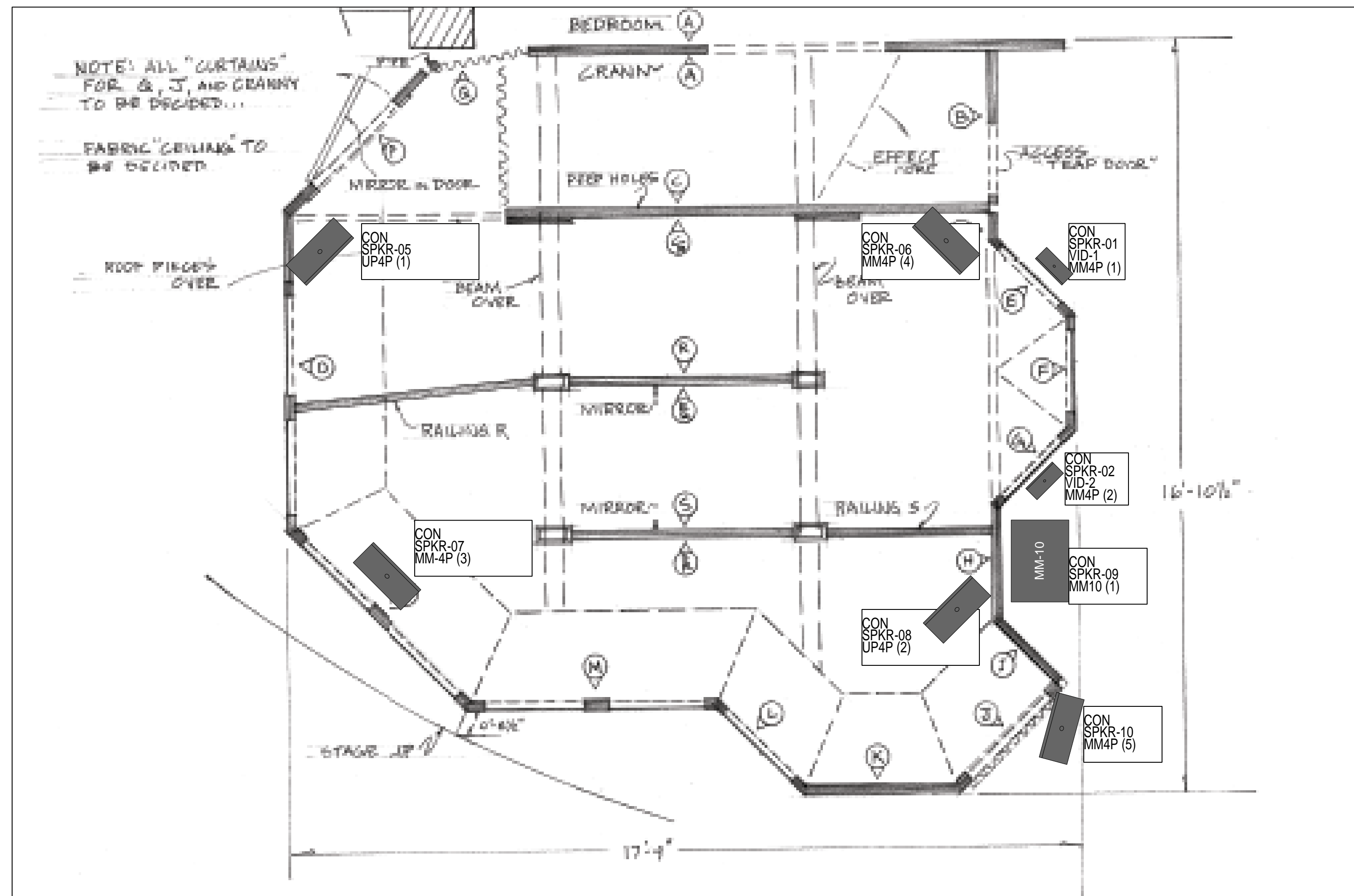
Haunted Hotel Code Key	
Updated May 8, 2014	
Full Name	Three-Letter Code
Ranting Brothers Midway	MWV
Service Entrance	SET
Cellar Steps	CST
O'Skully's Wharf	OWF
Kitchen Prep	KPP
Service Hall	SHL
Scullery	SLY
Boiler	BLR
Numbered Suites	NSS
Foyer	FYR
Coat Check	CCK
Dining Chamber	DCH
Tipsy's Parlour	TPR
Suite 13	S13
Washroom	WRM
Cranney	CNY
Conservatory	CON
Check Out	COT
Patchen's Picture Palace	PPP
Cold Storage	CSG
Elevator	ELV
Technical Areas:	
Central Service Area	CSA
Sound Booth	SBT
Grid Room	GRM
USL Room	ULR
Light Booth	LBT
Catwalk 1	CW1
Catwalk 2	CW2
Catwalk 3	CW3
Dimmer Room	DRM
Room 14	V14
Room 13	V13
Audience Area (House)	AAH
Dressing Room	DRM
Device Types (where n equals unique numeric ID, a= alpha ID)	
Speaker	SPKR-nn
Camera	CAM-nn
Microphone	MIC-nn
Motion Detector	MOTDETC-nn
Magnetic Sensor	MAGSENSR-nn
Photo Sensor	PHOTSENS-nn
Amp Rack	AMPTRACK-a
SFX Rack	SFXTRACK-a
TCP-I/O Box	TCPIO-a
Relay Box	RELAY-a
MechFX	MechFX-nn
SPLTRACK-01	Split Rack
Cable Types	
XLR	EN3
Speakon	
Coax/Power	
Cat5	
XGA	
Mechanical	

3 LETTER LOCATION CODE
SPEAKER NO.
MODEL
POSITION



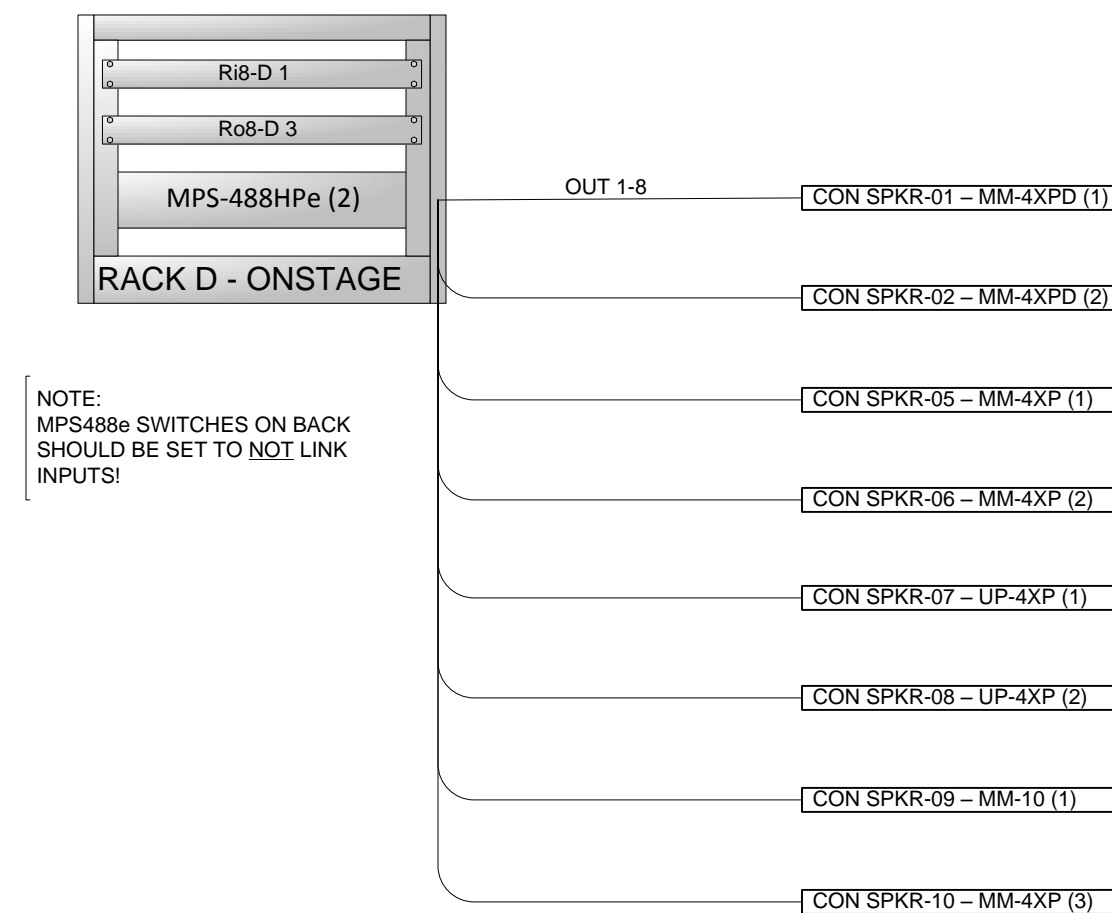
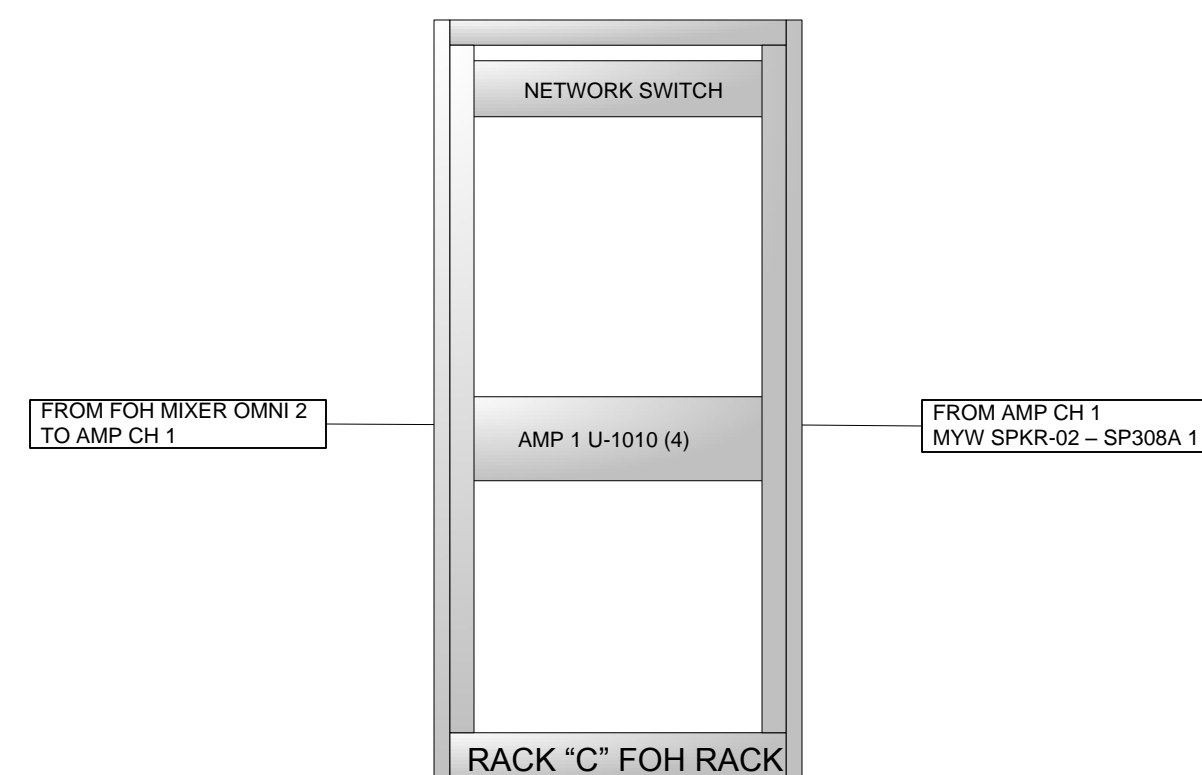
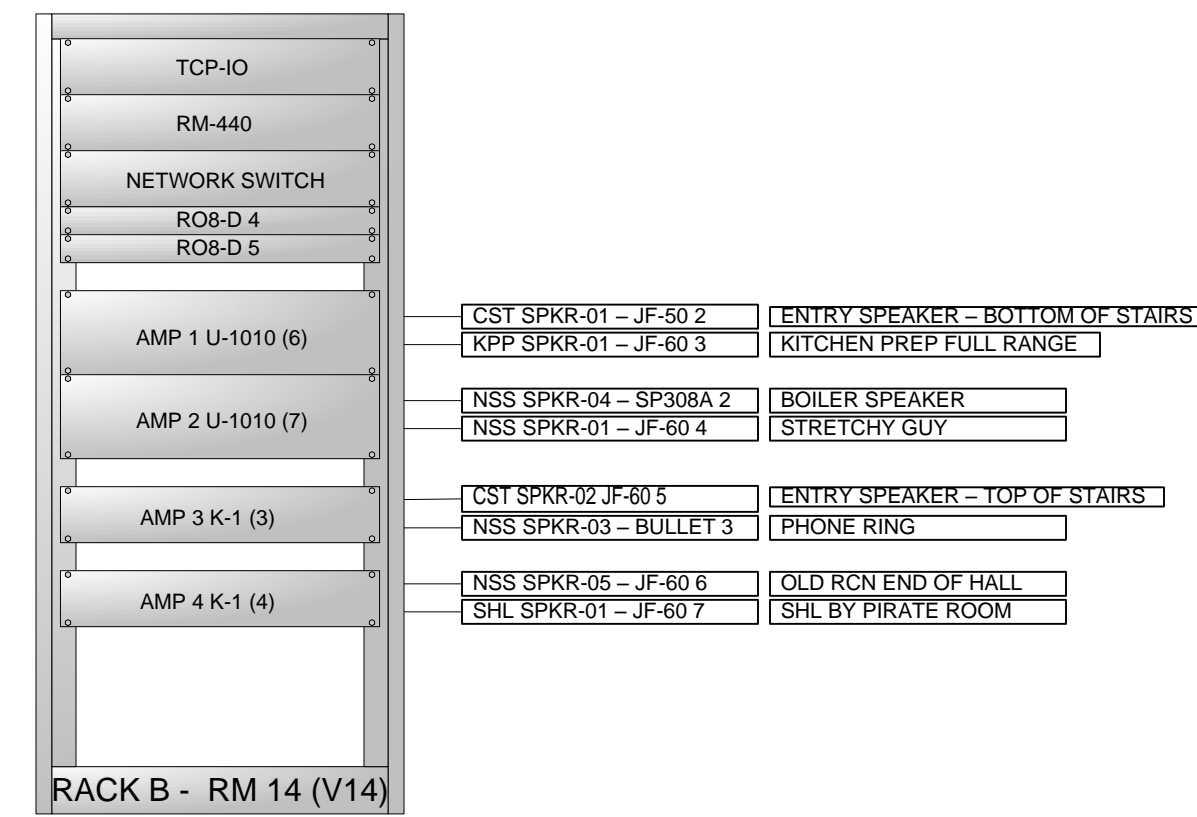
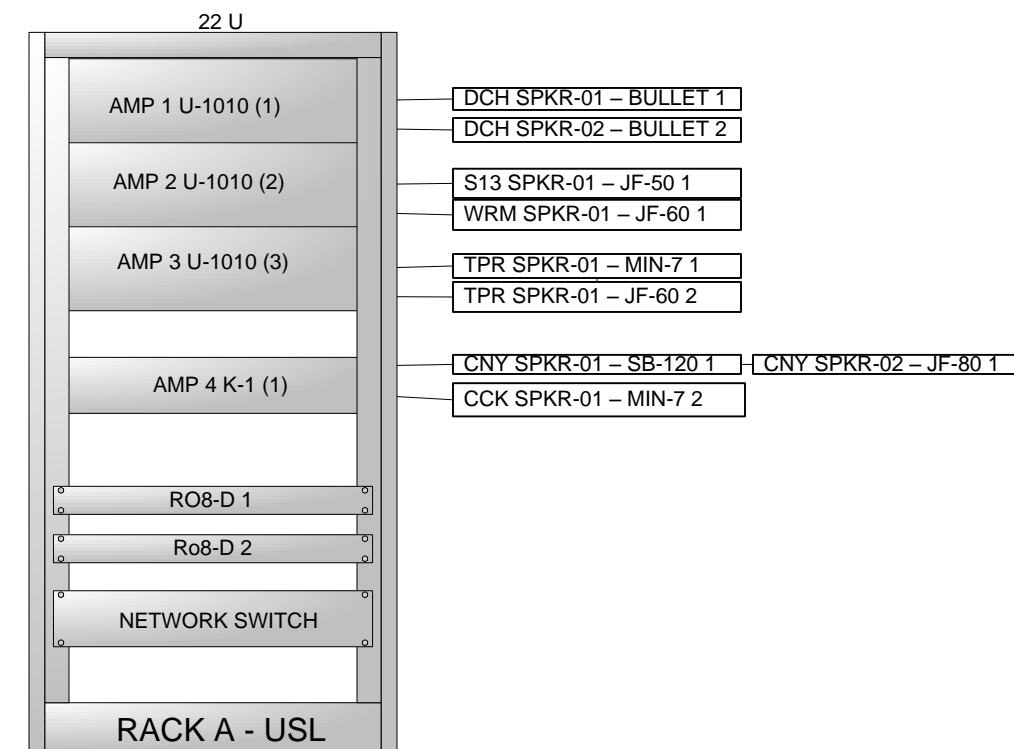
BRUCE ELLMAN THEATRE SOUND bruce@bruceellman.com		HAUNTED HOTEL 2014 New York City College of Technology Voorhees Hall 186 Jay Street, Brooklyn NY	
THIS DOCUMENT AND THE SPECIFICATIONS DESCRIBED WITHIN ARE THE EXCLUSIVE PROPERTY OF BRUCE ELLMAN THEATRE SOUND; ISSUED IN THE STRICTEST CONFIDENCE AND SHALL NOT BE REPRODUCED, COPIED, OR USED WITHOUT THE PRIOR WRITTEN PERMISSION OF BRUCE ELLMAN THEATRE SOUND.			
Exhibit Design: Norma Lee Chartoff Sound Design: Bruce Ellman		DATE 8/28/2014	DWG NO 102 - SYSTEM BLOCK DIAGRAM 2
Contract with TheatreWorks		SCALE 1 : 1	SHEET 3 of 11

Haunted Hotel Code Key	
Updated May 8, 2014	
Full Name	Three-Letter Code
Ranting Brothers Midway	MWY
Service Entrance	SET
Cellar Steps	CST
O'Skully's Wharf	OWF
Kitchen Prep	KPP
Service Hall	SHL
Scullery	SLY
Boiler	BLR
Numbered Suites	NSS
Foyer	FYR
Coat Check	CCK
Dining Chamber	DCH
Tipsy's Parlour	TPR
Suite 13	S13
Washroom	WRM
Cranney	CNY
Conservatory	CON
Check Out	COT
Patchen's Picture Palace	PPP
Cold Storage	CSG
Elevator	ELV
Technical Areas:	
Central Service Area	CSA
Sound Booth	SBT
Grid Room	GRM
USL Room	ULR
Light Booth	LBT
Catwalk 1	CW1
Catwalk 2	CW2
Catwalk 3	CW3
Dimmer Room	DRM
Room 14	V14
Room 13	V13
Audience Area (House)	AAH
Dressing Room	DRM
Device Types (where n equals unique numeric ID, a= alpha ID)	
Speaker	SPKR-nn
Camera	CAM-nn
Microphone	MIC-nn
Motion Detector	MOTDET-nn
Magnetic Sensor	MAGSENSR-nn
Photo Sensor	PHOTSENS-nn
Amp Rack	AMPRAK-a
SFX Rack	SFXRACK-a
TCP-IO Box	TCPIO-a
Relay Box	RELAY-a
MechFX	MechFX-nn
SPLTRACK-01	Split Rack
Cable Types	
XLR	EN3
Speakon	
Coax/Power	
Cat5	
XGA	
Mechanical	



BRUCE ELLMAN THEATRE SOUND bruce@bruceellman.com		HAUNTED HOTEL 2014 New York City College of Technology Voorhees Hall 186 Jay Street, Brooklyn NY	
THIS DOCUMENT AND THE SPECIFICATIONS DESCRIBED WITHIN ARE THE EXCLUSIVE PROPERTY OF BRUCE ELLMAN THEATRE SOUND; ISSUED IN THE STRICTEST CONFIDENCE AND SHALL NOT BE REPRODUCED, COPIED, OR USED WITHOUT THE PRIOR WRITTEN PERMISSION OF BRUCE ELLMAN THEATRE SOUND.			
Exhibit Design: Norma Lee Chartoff Sound Design: Bruce Ellman		DATE 8/28/2014	DWG NO 104 - CONSERVATORY SPEAKERS
Contract with TheatreWorks		SCALE 1/2" = 1'-0"	SHEET 4 of 11
Drafted by:		HAUNTED HOTEL CONSERVATORY SPEAKER PLACEMENT	

Haunted Hotel Code Key	
Updated May 8, 2014	
Full Name	Three-Letter Code
Ranting Brothers Midway	MWY
Service Entrance	SET
Cellar Steps	CST
O'Skully's Wharf	OWF
Kitchen Prep	KPP
Service Hall	SHL
Scully	SLY
Boiler	BLR
Numbered Suites	NSS
Foyer	FYR
Coat Check	CCK
Dining Chamber	DCH
Tipsy's Parlour	TPR
Suite 13	S13
Washroom	WRM
Cranny	CNY
Conservatory	CON
Check Out	COT
Patchen's Picture Palace	PPP
Cold Storage	CSG
Technical Areas:	
Central Service Area	CSA
Sound Booth	SBT
Grid Room	GRM
USL Room	ULR
Light Booth	LBT
Catwalk 1	CW1
Catwalk 2	CW2
Catwalk 3	CW3
Dimmer Room	DRM
Room 14	V14
Room 13	V13
Audience Area (House)	AAH
Dressing Room	DRM
Elevator	ELV
Device Types (where n equals unique numeric ID, a= alpha ID)	
Speaker	SPKR-nn
Camera	CAM-nn
Microphone	MIC-nn
Motion Detector	MOTDET-nn
Magnetic Sensor	MAGSENR-nn
Photo Sensor	PHOTSENS-nn
Amp Rack	AMPRAK-a
SFX Rack	SFXRACK-a
TCP-IO Box	TCP-IO-a
Relay Box	RELAY-a
MechFX	MechFX-nn
SPLTRACK-01	Split Rack
Cable Types	
XLR	EN3
Speakon	
Coax/Power	
Cat5	
XGA	
Mechanical	



NOTE:
MPS488e SWITCHES ON BACK
SHOULD BE SET TO NOT LINK
INPUTS!

NOTE:
RACKS A, B, AND D ARE CONNECTED
VIA ETHERNET CABLES
PLEASE RUN AT LEAST ONE SPARE CAT5E/6 TO EACH

BRUCE ELLMAN THEATRE SOUND bruce@bruceellman.com THIS DOCUMENT AND THE SPECIFICATIONS DESCRIBED WITHIN ARE THE EXCLUSIVE PROPERTY OF BRUCE ELLMAN THEATRE SOUND; ISSUED IN THE STRICTEST CONFIDENCE AND SHALL NOT BE REPRODUCED, COPIED, OR USED WITHOUT THE PRIOR WRITTEN PERMISSION OF BRUCE ELLMAN THEATRE SOUND.	HAUNTED HOTEL 2014 New York City College of Technology Voorhees Hall 186 Jay Street, Brooklyn NY		
	HAUNTED HOTEL RACK DRAWINGS		
Exhibit Design: Norma Lee Chartoff Sound Design: Bruce Ellman Contract with TheatreWorks Drafted by:	SIZE: D DATE: 8/28/2014 SCALE: 1" = 1'-0"	DWG NO: 105 - RACK DRAWING SHEET: 5 of 11	REV:

Haunted Hotel Code Key	
Updated May 8, 2014	
Full Name	Three-Letter Code
Ranting Brothers Midway	MWY
Service Entrance	SET
Cellar Steps	CST
O'Skully's Wharf	OWF
Kitchen Prep	KPP
Service Hall	SHL
Scullery	SLY
Boiler	BLR
Numbered Suites	NSS
Foyer	FYR
Coat Check	CCK
Dining Chamber	DCH
Tipsy's Parlour	TPR
Suite 13	S13
Washroom	WRM
Cranney	CNY
Conservatory	CON
Check Out	COT
Patchen's Picture Palace	PPP
Cold Storage	CSG
Elevator	ELV
Technical Areas:	
Central Service Area	CSA
Sound Booth	SBT
Grid Room	GRM
USL Room	ULR
Light Booth	LBT
Catwalk 1	CW1
Catwalk 2	CW2
Catwalk 3	CW3
Dimmer Room	DRM
Room 14	V14
Room 13	V13
Audience Area (House)	AAH
Dressing Room	DRM
Device Types (where n equals unique numeric ID, a= alpha ID)	
Speaker	SPKR-nn
Camera	CAM-nn
Microphone	MIC-nn
Motion Detector	MOTDET-nn
Magnetic Sensor	MAGSENSR-nn
Photo Sensor	PHOTSENS-nn
Amp Rack	AMPTRACK-a
SFX Rack	SFXTRACK-a
TCP-IO Box	TCPIO-a
Relay Box	RELAY-a
MechFX	MechFX-nn
SPLTRACK-01	Split Rack
Cable Types	
XLR	EN3
Speakon	
Coax/Power	
Cat5	
XGA	
Mechanical	

THE GRAVESEND INN 2014

	DM1000			
	INPATCH	CH. NAME	SOURCE	ASSIGN
LAYER 1	CH1	PAGE MIC HOUSE	AN1	AUX 1 (HOUSE PAGE)
ANALOG	CH2	PAGE MIC LOBBY	AN1	AUX 6 (LOBBY PAGE)
	CH3	PAGE MIC BS	AN1	BUS 4 (BACKSTAGE PAGE)
	CH4	WATCHOUT DCH	S1-03	AUX 2 (DCH)
	CH5	WATCHOUT CON VID 1	S1-04	AUX 4
	CH6	WATCHOUT CON VID 2	S1-05	AUX 5
	CH7			
	CH8			
	CH9	SEC/PCDI 1	AN9	BUS 7
	CH10	SEC/PCDI 2	AN10	BUS 8
LAYER 2	CH17	Q1	S1-01	AUX 1 (GRD 1 - HOUSE CQ1)
DIGITAL	CH18	Q2	S1-02	AUX 2 (DCH 3 - DINING CHAMBER UPM-1P)
	CH19	Q5	S1-06	AUX 3 (S13 1 - SUITE 13)
	CH20	Q11	S1-07	AUX 4 (CON 1, VID 1 - MM-4XPD)
	CH21	Q12	S1-08	AUX 5 (CON 2, VID 2 - MM-4XPD)
	CH22	Q13	S1-09	AUX 6 (LOBBY SPEAKER)
	CH23	Q20	S1-10	AUX 7 (CSG 1 - UPA-2P)
	CH24	Q26	S1-11	AUX 8 (NSS-6, SPEAKER NEAR THEATRE ENTRANCE)
	CH25	Q27	S1-12	BUS 1 (SLH SPEAKER NEAR PIRATE ROOM)
	CH26	Q34	S1-13	BUS 2 (CON 6)
	CH27	Q36	S1-14	BUS 3 (CON 8)
	CH28			
	CH29			
	CH30			
	CH31			
	CH32			
LAYER 3	CH33	DCH	BUS 4	AUX 2
DIGITAL	CH34	S13	BUS 4	AUX 3
PAGING	CH35	VID	BUS 4	AUX 4 / 5
	CH36	CSG	BUS 4	AUX 7
	CH37	NSS6	BUS 4	AUX 8
	CH38	SLH	BUS 4	BUS 1
	CH39			
	CH40			
	CH41			
	CH42			
	CH43			
	CH44			
	CH45			
	CH46			
	CH47			
	CH48			
	DM1000			
	OUTPATCH	SEND TO:		
	AUX 1	OMNI 1	GRD-1	
	AUX 2	OMNI 2	MWY-1	
	AUX 3	S1-02	DCH-3	
	AUX 4	S1-04	CSG-01	
	AUX 5	S1-11	CON-1	
	AUX 6	S1-12	CON-2	
	AUX 7	S1-14	CON-6	
	AUX 8	S1-15	CON-8	
	BUS 1	S1-09	SLH-1	
	BUS 2	S1-10	CON-6	
	BUS-3	S1-11	CON-8	
	BUS-4	LAYER 3	PAGE	
	BUS-5	N/A		
	BUS-6	N/A		
	BUS-7	OMNI 3	AAH-1	
	BUS-8	OMNI 4	AAH-2	

NOTES:

LAYER 1 (INPUTS 1-16):

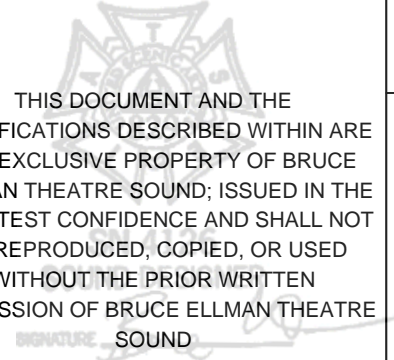
- 1) INPUTS 1-3 ARE ALL ASSIGNED FROM ANALOG IN "1" PAGING MIC.
- 2) INPUT 3 (BACKSTAGE PAGING) IS ROUTED TO BUS 4
- 3) INPUTS 4-6 ARE WATCHOUT INPUTS FROM SLOT 1 DANTE FEEDS
- 4) FEED FROM CONSERVATORY WATCHOUT (BE SURE TO ADJUST MIX LEVEL BETWEEN DIRECT/FILL SPEAKERS CON 1/6 AND CON 2/8 USING THE APPROPRIATE INPUT CHANNELS— 4 / 5 AND 6 / 7)
- 5) INPUTS 9 & 10 ARE ANALOG FROM THE VIDEO SECURITY SYSTEM PCDI'S

LAYER 2 (INPUTS 17-32):

- 1) ALL ARE QLAB / DANTE FEEDS REQUIRING ADDITIONAL ROUTING
- 2) ALL ARE AT UNITY GAIN

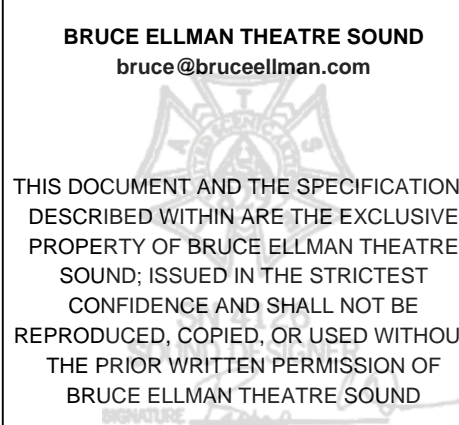
LAYER 3 (INPUTS 33-48):

- 1) USED TO DIRECT AND SET LEVEL TO BACKSTAGE PAGE SPEAKERS
- 2) ALL ARE SOURCED FROM BUS 4
- 3) SET LEVELS FOR INDIVIDUAL BACKSTAGE SPEAKERS ON LAYER 3 AND SET OVERALL LEVEL ON LAYER 1, INPUT 3

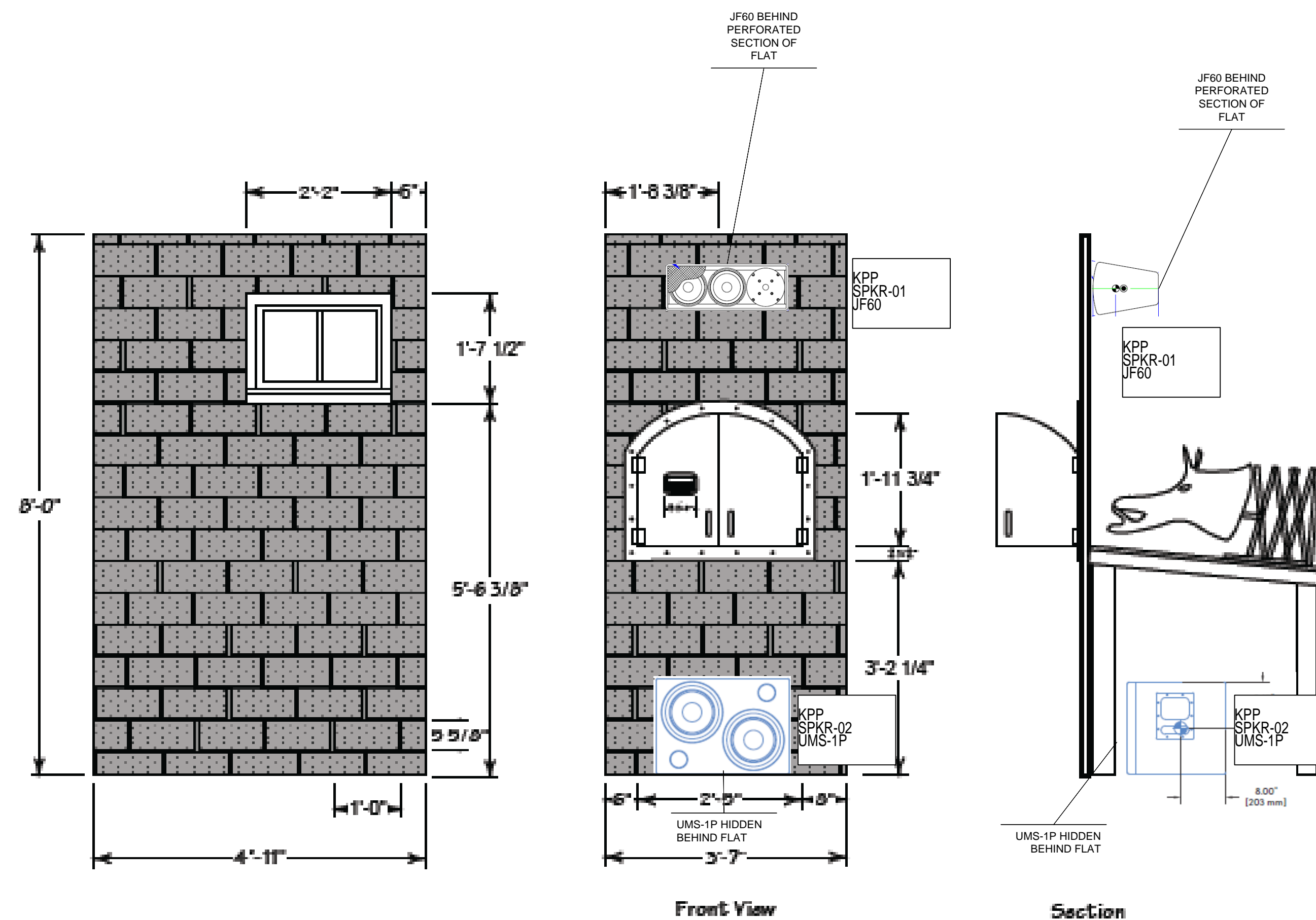
BRUCE ELLMAN THEATRE SOUND bruce@bruceellman.com 	HAUNTED HOTEL 2014 New York City College of Technology Voorhees Hall 186 Jay Street, Brooklyn NY		
	HAUNTED HOTEL MIXER PATCH SCHEDULE		
Exhibit Design: Norma Lee Chartoff Sound Design: Bruce Ellman Contract with TheatreWorks Drafted by:	SIZE: D DATE: 8/28/2014	DWG NO: 106A - DM1000 PATCH	REV: SCALE: 1" = 1'-0" SHEET: 7 of 11

Haunted Hotel Code Key	
Updated May 8, 2014	
Full Name	Three-Letter Code
Ranting Brothers Midway	MWY
Service Entrance	SET
Cellar Steps	CST
O'Skully's Wharf	OWF
Kitchen Prep	KPP
Service Hall	SHL
Scullery	SLY
Boiler	BLR
Numbered Suites	NSS
Foyer	FYR
Coat Check	CCK
Dining Chamber	DCH
Tipsy's Parlour	TPR
Suite 13	S13
Washroom	WRM
Cranny	CNY
Conservatory	CON
Check Out	COT
Patchen's Picture Palace	PPP
Cold Storage	CSG
Elevator	ELV
Technical Areas:	
Central Service Area	CSA
Sound Booth	SBT
Grid Room	GRM
USL Room	ULR
Light Booth	LBT
Catwalk 1	CW1
Catwalk 2	CW2
Catwalk 3	CW3
Dimmer Room	DRM
Room 14	V14
Room 13	V13
Audience Area (House)	AAH
Dressing Room	DRM
Device Types (where n equals unique numeric ID, a= alpha ID)	
Speaker	SPKR-nn
Camera	CAM-nn
Microphone	MIC-nn
Motion Detector	MOTDET-nn
Magnetic Sensor	MAGSENSR-nn
Photo Sensor	PHOTSENS-nn
Amp Rack	AMPACK-a
SFX Rack	SFXRACK-a
TCP+O Box	TCPIO-a
Relay Box	RELAY-a
MechFX	MechFX-nn
SPLTRACK-01	Split Rack
Cable Types	
XLR	EN3
Speakon	
Coax/Power	
Cat5	
XGA	
Mechanical	

QLAB OUT	ANALOG SOURCE	DESCRIPTION	DM1000 INPUT CHANNEL(S)	DM1000 IN PATCH	DM1000 OUTPATCH	ANALOG OUT	SPEAKER
1	-	THEATER UNDER SCORE	17	S1-01	AUX 1 - OMNI 1	DM1000 OMNI 1	GRID-01 (CQ-1)
-	MIC	HOUSE PAGE	1	ANA1	AUX 1 - OMNI 1	DM1000 OMNI 1	GRID-01 (CQ-1)
2	-	DINING CHAMBOR F/X	18	S1-02	AUX 2 - S1-02	Ro8-D/1 CH 1	DCH-03 (UPM-1P)
-	Ri8-D/6 CH 1	DINING CHAMBOR VIDEO	4	S1-03	AUX 2 - S1-02	Ro8-D/1 CH 1	DCH-03 (UPM-1P)
-	MIC	BACKSTAGE PAGE	3 / 33	ANA1	AUX 2 - S1-02	Ro8-D/1 CH 1	DCH-03 (UPM-1P)
3	-	DINING CHAMBOR F/X	-	-	-	Ro8-D/2 CH 1	DCH-01 (BULLET)
4	-	DINING CHAMBOR F/X	-	-	-	Ro8-D/2 CH 2	DCH-02 (BULLET)
5	-	SUITE 13 F/X	19	S1-06	AUX 3 - S1-03	Ro8-D/2 CH 3	S13-01 (JF-60)
-	MIC	BACKSTAGE PAGE	3 / 34	ANA1	AUX 3 - S1-03	Ro8-D/2 CH 3	S13-01 (JF-60)
6	-	WASHROOM	-	-	-	Ro8-D/2 CH 4	WRM-01 (JF-60)
7	-	TIPSY'S PARLOR	-	-	-	Ro8-D/2 CH 5	TPR-01 (MIN-7)
8	-	TIPSY'S PARLOR	-	-	-	Ro8-D/2 CH 6	TPR-02 (JF-60)
9	-	CRANNY	-	-	-	Ro8-D/2 CH 7	CNY-01 (SB-120) CNY-02 (JF-80)
10	-	CHECK IN (BEAR)	-	-	-	Ro8-D/2 CH 8	CCK-01 (MIN-7)
-	SECURITY PCDI	AUDITORIUM AUDIO FROM SECURITY CAM	9	ANA9	BUS 7	DM1000 OMNI 3	AAH-01 (UPM-1P)
-	SECURITY PCDI	AUDITORIUM AUDIO FROM SECURITY CAM	10	ANA10	BUS 8	DM1000 OMNI 4	AAH-02 (UPM-1P)
11	-	VIDEO F/X LEFT	20	S1-07	AUX 4 - S1-04	Ro8-D/3 CH 1	CON-01 (MM-4XPD)
12	-	VIDEO F/X RIGHT	21	S1-08	AUX 5 - S1-05	Ro8-D/3 CH 2	CON-02 (MM-4XPD)
-	Ri8-D/6 CH2	CONSERVATORY VIDEO LEFT CHANNEL	5	S1-04	AUX 4 - S1-04	Ro8-D/3 CH 1	CON-01 (MM-4XPD)
-	Ri8-D/6 CH3	CONSERVATORY VIDEO RIGHT CHANNEL	6	S1-05	AUX 5 - S1-05	Ro8-D/3 CH 2	CON-02 (MM-4XPD)
-	Ri8-D/6 CH2	CONSERVATORY UP LEFT AMBIANCE SPEAKER	7	S1-04	BUS 2 - S1-13	Ro8-D/3 CH 4	CON-06 (MM-4XP)
-	Ri8-D/6 CH3	CONSERVATORY DOWN LEFT AMBIANCE SPEAKER	8	S1-05	BUS 3 - S1-14	Ro8-D/3 CH 6	CON-08 (UP-4XP)
-	MIC	BACKSTAGE PAGE	3 / 35	ANA1	AUX 4 - S1-04 AUX 5 - S1-05	Ro8-D/3 CH 1 Ro8-D/3 CH 2	CON-01 (MM-4XPD) CON-02 (MM-4XPD)
13	-	LOBBY MUSIC (LOBBY)	22	S1-09	AUX 6 - OMNI 2	DM1000 OMNI 2	MYW-02 (SP308A)
-	MIC	LOBBY PAGE	2	ANA1	AUX 6 - OMNI 2	DM1000 OMNI 2	MYW-02 (SP308A)
15	-	TOP OF STAIRS MUSIC-F/X	-	-	-	Ro8-D/4 CH 8	CST-02 (JF-60)
17	-	BOTTOM OF STAIRS MUSIC - F/X	-	-	-	Ro8-D/4 CH 1	CST-01 (JF-60)
18	-	KITCHEN PREP FULL RANGE	-	-	-	Ro8-D/4 CH 2	KPP-01 (JF-80)
19	-	SCULLERY	-	-	-	Ro8-D/4 CH 3	SLY-01 (UPA-1P)
20	-	COLD STORAGE FULL RANGE	23	S1-10	AUX 7 - S1-07	Ro8-D/4 CH 4	CSG-01 (UPA-2P)
-	MIC	BACKSTAGE PAGE	3/36	ANA1	AUX 7 - S1-07	Ro8-D/4 CH 4	CSG-01 (UPA-2P)
21	-	COLD STORAGE SUB	-	-	-	Ro8-D/4 CH 5	CSG-02 (UMS-1P)
22	-	BOILER SPEAKER	-	-	-	Ro8-D/4 CH 6	NSS-04 (SP308A)
23	-	STRETCHY GUY	-	-	-	Ro8-D/4 CH 7	NSS-01 (JF-60)
25	-	PHONE	-	-	-	Ro8-D/5 CH 1	NSS-03 (BULLET)
26	-	RECEPTION(THEATRE ENTRANCE	24	S1-11	AUX 8 - S1-08	Ro8-D/5 CH 2	NSS-06 (JF-60)
-	MIC	BACKSTAGE PAGE	3/37	ANA1	AUX 8 - S1-08	Ro8-D/5 CH 2	NSS-06 (JF-60)
27	-	OUTSIDE PIRATE ROOM	25	S1-12	BUS 1 - S1-09	Ro8-D/5 CH 3	SHL-01 (JF-60)
-	MIC	BACKSTAGE PAGE	3/38	ANA1	BUS 1 - S1-09	Ro8-D/5 CH 3	SHL-01 (JF-60)
28	-	KITCHEN PREP SUB	-	-	-	Ro8-D/5 CH 4	KPP-02 (UMS-1P)
33	-	CONSERVATORY UP RIGHT AMBIANCE SPEAKER	-	-	-	Ro8-D/3 CH 3	CON-05 (UP-4XP)
34	-	CONSERVATORY UP LEFT AMBIANCE SPEAKER	26	S1-13	BUS 2 - S1-13	Ro8-D/3 CH 4	CON-06 (MM-4XP)
35	-	CONSERVATORY DOWN RIGHT AMBIANCE SPEAKER	-	-	-	Ro8-D/3 CH 5	CON-07 (MM-4XP)
36	-	CONSERVATORY DOWN LEFT AMBIANCE SPEAKER	27	S1-14	BUS 3 - S1-14	Ro8-D/3 CH 6	CON-08 (UP-4XP)
37	-	CONSERVATORY SUB	-	-	-	Ro8-D/3 CH 7	CON-09 (MM-10P)
38	-	TRASH CAN	-	-	-	Ro8-D/3 CH 8	CON-10 (MM-4XP)

 <p>BRUCE ELLMAN THEATRE SOUND bruce@bruceellman.com</p> <p>THIS DOCUMENT AND THE SPECIFICATIONS DESCRIBED WITHIN ARE THE EXCLUSIVE PROPERTY OF BRUCE ELLMAN THEATRE SOUND. ISSUED IN THE STRICTEST CONFIDENCE AND SHALL NOT BE REPRODUCED, COPIED, OR USED WITHOUT THE PRIOR WRITTEN PERMISSION OF BRUCE ELLMAN THEATRE SOUND.</p>	<p>HAUNTED HOTEL 2014 New York City College of Technology Voorhees Hall 186 Jay Street, Brooklyn NY</p>		
	<p>HAUNTED HOTEL SIGNAL FLOW</p>		
<p>Exhibit Design: Norma Lee Chartoff Sound Design: Bruce Elluman</p>	<p>DATE 8/28/2014</p>	<p>DWG NO. 106B - SIGNAL FLOW</p>	<p>REV</p>
<p>Contract with TheatreWorks Drafted by:</p>	<p>SCALE 1/4" = 1'</p>	<p>TO SCALE</p>	<p>SHEET 8 of 11</p>

Haunted Hotel Code Key	
Updated May 8, 2014	
Full Name	Three-Letter Code
Ranting Brothers Midway	MWY
Service Entrance	SET
Cellar Steps	CST
O'Skully's Wharf	OWF
Kitchen Prep	KPP
Service Hall	SHL
Scullery	SLY
Boiler	BLR
Numbered Suites	NSS
Foyer	FYR
Coat Check	CCK
Dining Chamber	DCH
Tipsy's Parlour	TFR
Suite 13	S13
Washroom	WRM
Cranry	CNY
Conservatory	CON
Check Out	COT
Patchen's Picture Palace	PPP
Cold Storage	CSG
Elevator	ELV
Technical Areas:	
Central Service Area	CSA
Sound Booth	SBT
Grid Room	GRM
USL Room	ULR
Light Booth	LBT
Catwalk 1	CW1
Catwalk 2	CW2
Catwalk 3	CW3
Dimmer Room	DRM
Room 14	V14
Room 13	V13
Audience Area (House)	AAH
Dressing Room	DRM
Device Types (where n equals unique numeric ID, a= alpha ID)	
Speaker	SPKR-nnn
Camera	CAM-nn
Microphone	MIC-nn
Motion Detector	MOTDETC-nn
Magnetic Sensor	MAGSENSR-nn
Photo Sensor	PHOTSENS-nn
Amp Rack	AMPTRACK-a
SFX Rack	SFXRACK-a
TCP-IO Box	TCPIO-a
Relay Box	RELAY-a
MechFX	MechFX-nn
SPLTRACK-01	Split Rack
Cable Types	
XLR	EN3
Speakon	
Coax/Power	
Cat5	
XGA	
Mechanical	

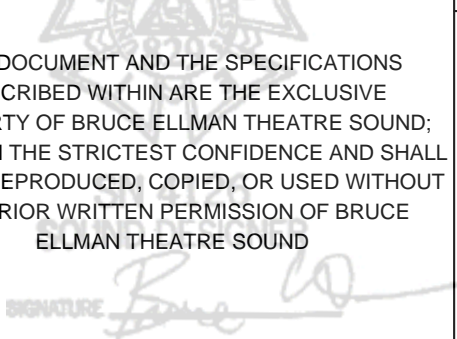


Window Flat

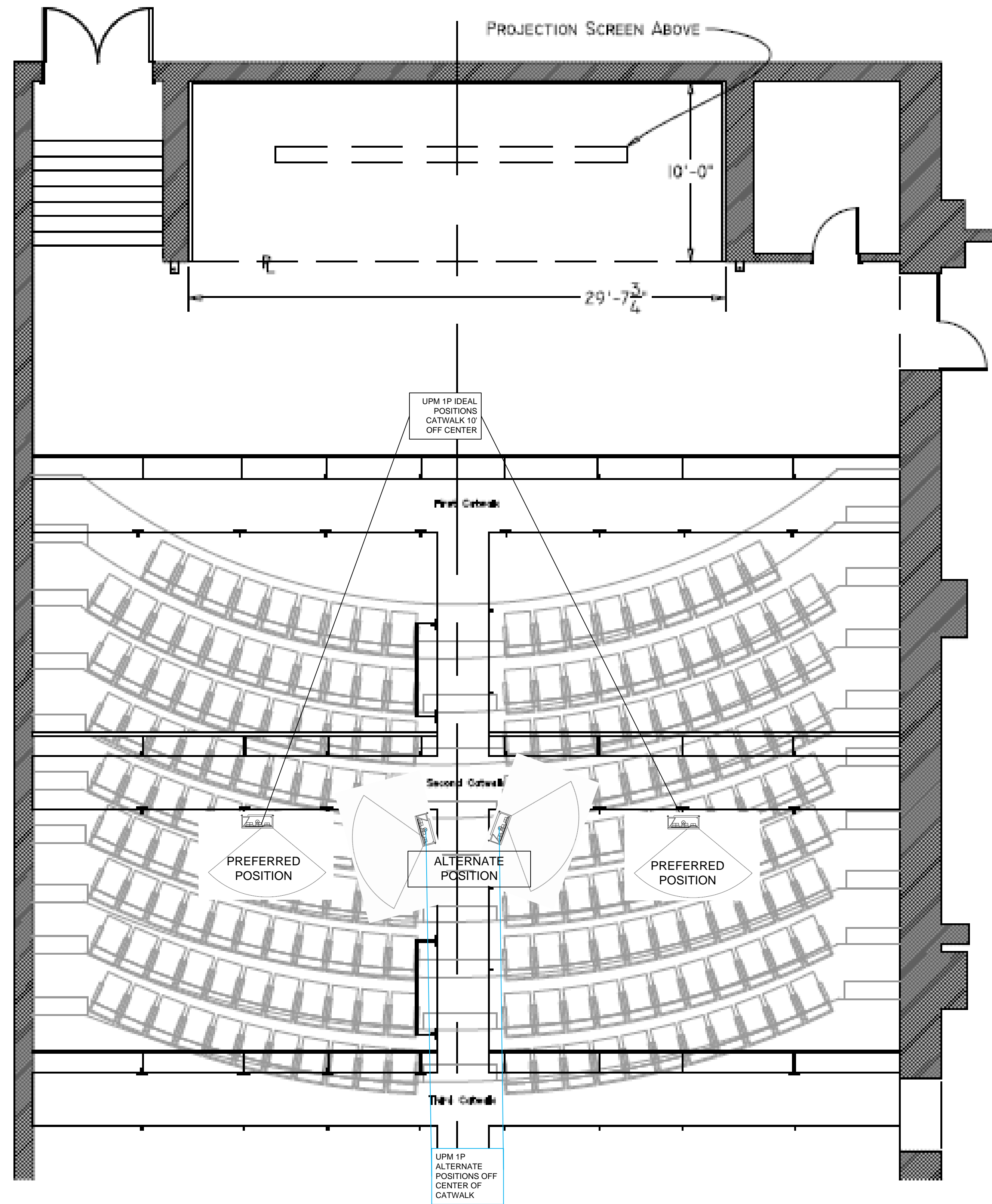
- Typical 1/2" ply casement style window frame with two plexi panes and 1x1 sill
- 1/4" fire bricks are distressed with sanded edges and are approx. 5 5/8 x 12 inches on ctr. Bricks wrap corner of the two flats.

Oven Flat

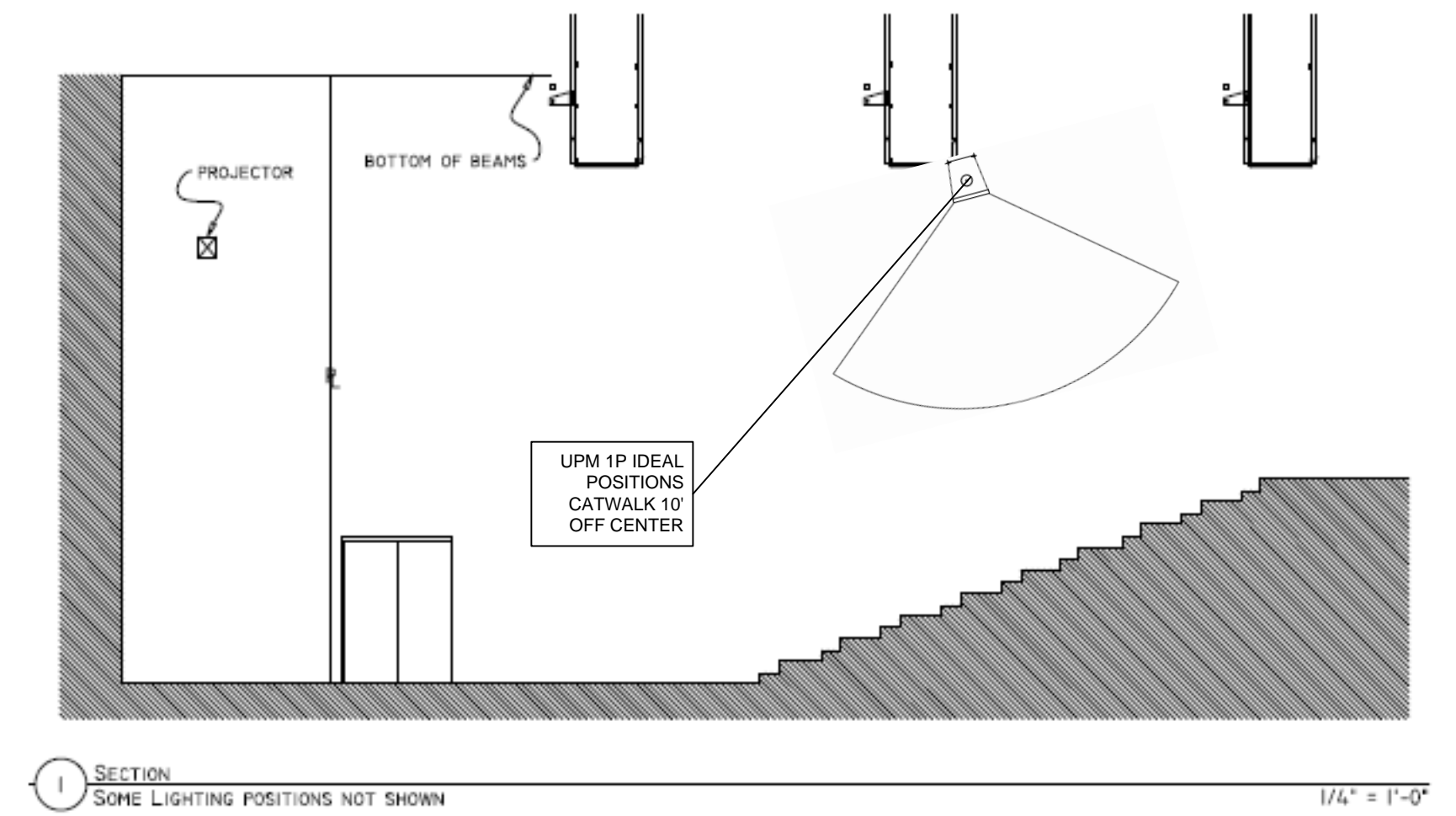
- 1/2" ply doors open out with Boar FX popping out at an angle TBD
- Boar Head exists in stock
- See HEX109 pic in research folder for sample jump mechanism
- Handles provided by designer
- Vent and rivets are 1/4" thick
- Trim around doors is 1/2" ply

BRUCE ELLMAN THEATRE SOUND bruce@bruceellman.com  THIS DOCUMENT AND THE SPECIFICATIONS DESCRIBED WITHIN ARE THE EXCLUSIVE PROPERTY OF BRUCE ELLMAN THEATRE SOUND. ISSUED IN THE STRICTEST CONFIDENCE AND SHALL NOT BE REPRODUCED, COPIED, OR USED WITHOUT THE PRIOR WRITTEN PERMISSION OF BRUCE ELLMAN THEATRE SOUND.	HAUNTED HOTEL 2014 New York City College of Technology Voorhees Hall 186 Jay Street, Brooklyn NY			
	HAUNTED HOTEL KITCHEN PREP SPEAKER PLACEMENT			
Exhibit Design: Norma Lee Chartoff Sound Design: Bruce Ellman	SIZE D	DATE 8/28/2014	DWG NO 107 - KITCHEN PREP SPEAKERS	REV
Contract with TheatreWorks	SCALE	1/2" = 1'-0"	NOT TO SCALE!	SHEET 9 of 11

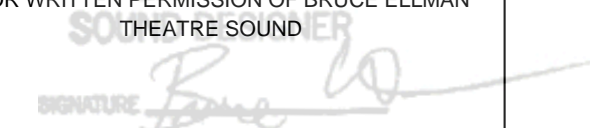
Haunted Hotel Code Key	
Updated May 8, 2014	
Full Name	Three-Letter Code
Ranting Brothers Midway	MWY
Service Entrance	SET
Cellar Steps	CST
O'Skully's Wharf	OWF
Kitchen Prep	KPP
Service Hall	SHL
Scullery	SLY
Boiler	BLR
Numbered Suites	NSS
Foyer	FYR
Coat Check	CCK
Dining Chamber	DCH
Tipsy's Parlour	TPR
Suite 13	S13
Washroom	WRM
Cranny	CNY
Conservatory	CON
Check Out	COT
Patchen's Picture Palace	PPP
Cold Storage	CSG
Elevator	ELV
Technical Areas:	
Central Service Area	CSA
Sound Booth	SBT
Grid Room	GRM
USL Room	ULR
Light Booth	LBT
Catwalk 1	CW1
Catwalk 2	CW2
Catwalk 3	CW3
Dimmer Room	DRM
Room 14	V14
Room 13	V13
Audience Area (House)	AAH
Dressing Room	DRM
Device Types (where n equals unique numeric ID, a= alpha ID)	
Speaker	SPKR-nn
Camera	CAM-nn
Microphone	MIC-nn
Motion Detector	MOTDETC-nn
Magnetic Sensor	MAGSENSR-nn
Photo Sensor	PHOTSENS-nn
Amp Rack	AMPTRACK-a
SFX Rack	SFXRACK-a
TCP-I/O Box	TCPIO-a
Relay Box	RELAY-a
MechFX	MechFX-nn
SPLTRACK-01	Split Rack
Cable Types	
XLR	EN3
Speakon	
Coax/Power	
Cat5	
XGA	
Mechanical	



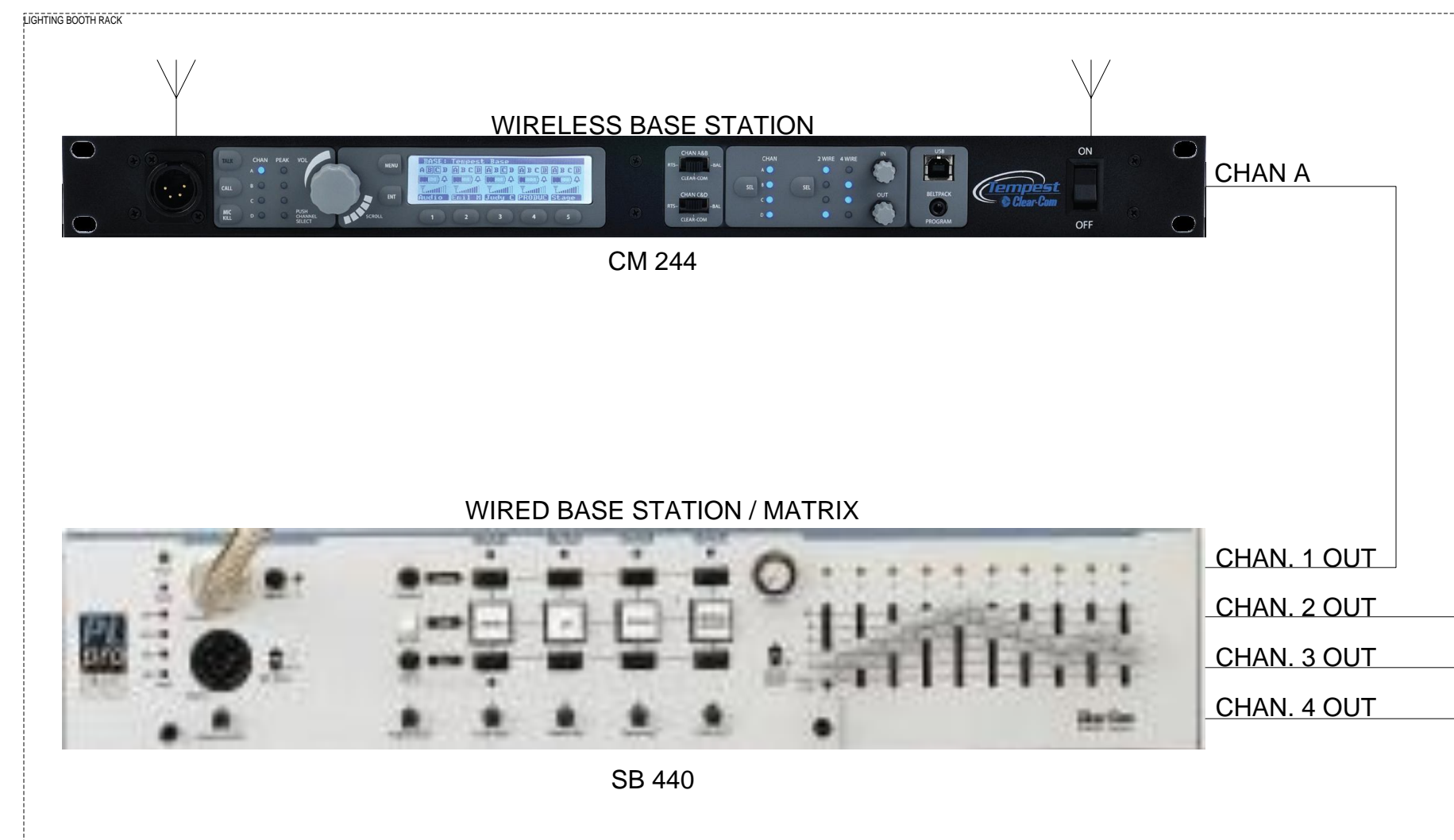
1 GROUND PLAN 1/4" = 1'-0"



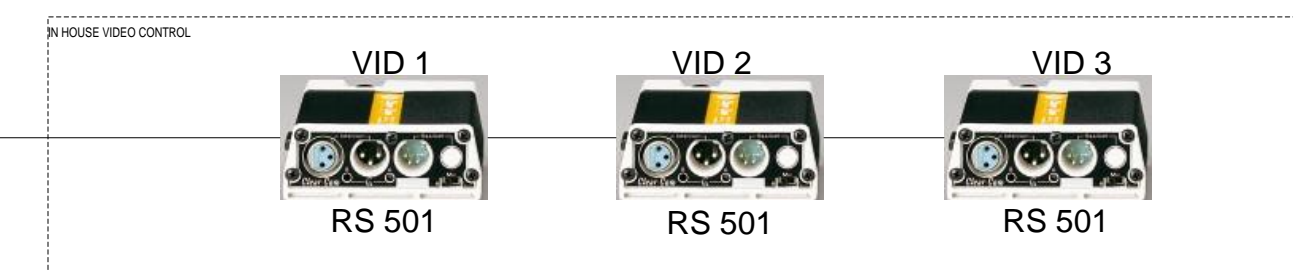
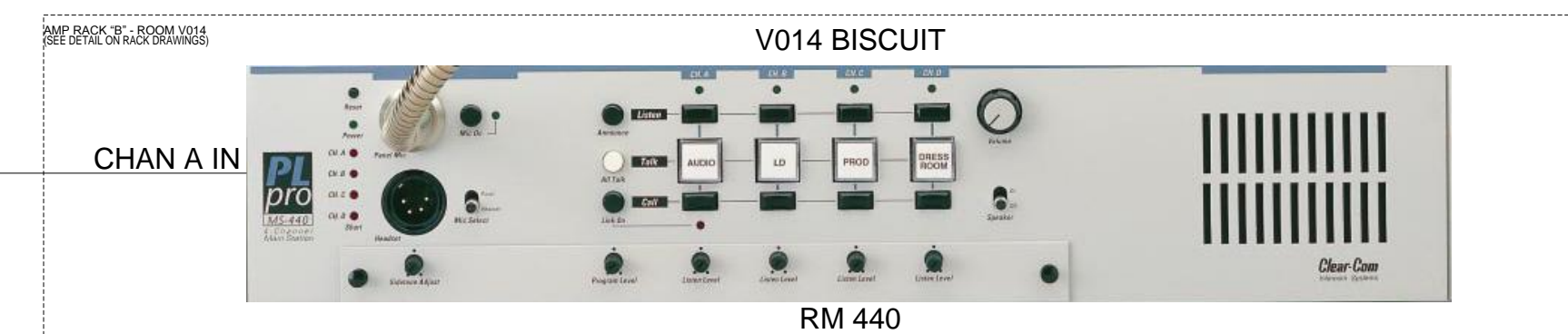
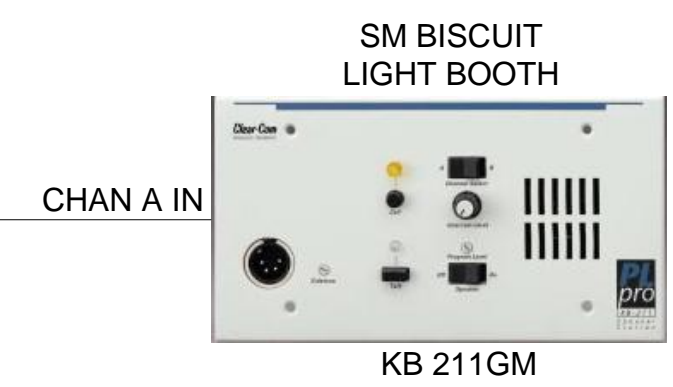
1 SECTION SOME LIGHTING POSITIONS NOT SHOWN 1/4" = 1'-0"

BRUCE ELLMAN THEATRE SOUND bruce@bruceellman.com 	HAUNTED HOTEL 2014 New York City College of Technology Voorhees Hall 186 Jay Street, Brooklyn NY		
	HAUNTED HOTEL AUDIENCE AREA SPEAKERS		
Exhibit Design: Norma Lee Chartoff Sound Design: Bruce Ellman	SIZE: D DATE: 8/28/2014	DWG NO: 108 - AUDIENCE AREA SPEAKERS	REV:
Contract with TheatreWorks Drafted by:	SCALE: 1/4" = 1'-0"	NOT TO SCALE	SHEET: 10 of 11

Haunted Hotel Code Key	
Updated May 8, 2014	
Full Name	Three-Letter Code
Ranting Brothers Midway	MWY
Service Entrance	SET
Cellar Steps	CST
O'Skully's Wharf	OWF
Kitchen Prep	KPP
Service Hall	SHL
Scullery	SLY
Boiler	BLR
Numbered Suites	NSS
Foyer	FYR
Coat Check	CCK
Dining Chamber	DCH
Tipsy's Parlour	TFR
Suite 13	S13
Washroom	WRM
Cranry	CNY
Conservatory	CON
Check Out	COT
Patchen's Picture Palace	PPP
Cold Storage	CSG
Elevator	ELV
Technical Areas:	
Central Service Area	CSA
Sound Booth	SBT
Grid Room	GRM
USL Room	ULR
Light Booth	LBT
Catwalk 1	CW1
Catwalk 2	CW2
Catwalk 3	CW3
Dimmer Room	DRM
Room 14	V14
Room 13	V13
Audience Area (House)	AAH
Dressing Room	DRM
Device Types (where n equals unique numeric ID, a= alpha ID)	
Speaker	SPKR-nn
Camera	CAM-nn
Microphone	MIC-nn
Motion Detector	MOTDETC-nn
Magnetic Sensor	MAGSENSR-nn
Photo Sensor	PHOTSENS-nn
Amp Rack	AMPTRACK-a
SFX Rack	SFXRACK-a
TCP-I/O Box	TCPIO-a
Relay Box	RELAY-a
MechFX	MechFX-nn
SPLTRACK-01	Split Rack
Cable Types	
XLR	EN3
Speakon	
Coax/Power	
Cat5	
XGA	
Mechanical	



NOTE:
ALL WIRED COMM CONNECTIONS ARE VIA 3-PIN XLR



BRUCE ELLMAN THEATRE SOUND bruce@bruceellman.com		HAUNTED HOTEL 2014 New York City College of Technology Voorhees Hall 186 Jay Street, Brooklyn NY			
THIS DOCUMENT AND THE SPECIFICATIONS DESCRIBED WITHIN ARE THE EXCLUSIVE PROPERTY OF BRUCE ELLMAN THEATRE SOUND; ISSUED IN THE STRICTEST CONFIDENCE AND SHALL NOT BE REPRODUCED, COPIED, OR USED WITHOUT THE PRIOR WRITTEN PERMISSION OF BRUCE ELLMAN THEATRE SOUND.					
Exhibit Design: Norma Lee Chartoff Sound Design: Bruce Ellman		SIZE D	DATE 8/28/2014	DWG NO 200 - COMS	REV
Contract with TheatreWorks Drafted by:		SCALE 1" = 1'-0"	SHEET 11 of 11		